

AMIE GARTENBERG, ESQ.

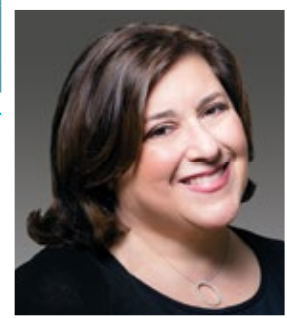
PRINCIPAL ► TAX & BUSINESS SERVICES



212.485.5675



amie.gartenberg@marcumllp.com



Amie Gartenberg is a principal in the Firm's New York City office. Ms. Gartenberg concentrates her practice in estate and succession planning, as well as complex probate and estate administration. She advises high net worth (often multigenerational) clients regarding sophisticated estate and business succession planning with an emphasis on tax-efficient estate, gift, generation-skipping transfers, and income tax planning, including structures and strategies in the context of business transactions, personal and estate financial planning, charitable activities, and beneficial planning for family members with special needs.

She represents fiduciaries in every aspect of estate administration from the probate process through accounting and distribution to beneficiaries, as well as preparing estate tax returns and representation of clients on federal and state estate and inheritance tax audits.

Prior to joining Marcum LLP, Ms. Gartenberg was, for over 30 years, the Trust and Estates Partner in the Hackensack and NYC offices of Gartenberg Howard, LLP. She began her career at a boutique intellectual property law firm assisting well known visual artists transfer their often unique legacies and property rights.

Ms. Gartenberg has been peer review rated as a pre-eminent lawyer ("AV" rated) by Martindale-Hubbell and is a recipient of the AVO Clients' Choice Award.

Professional & Civic Affiliations

New York State Bar Association, Trusts & Estates Section
New Jersey State Bar, Real Property, Probate and Trust Law Section
Member of the Board of Trustees of the Jewish Home Family of Northern New Jersey

Articles & Presentations

Ethical Challenges for the Trusts and Estates Practitioner
So You've Been Appointed Executor... Now What Do You Do?
Maintaining an Ethical Balance in Probate Practice
New York State Trial Lawyers' Association: Surrogate's Court Practice for PI/Med Mal Cases
Planning for Aging: Health & wealth decisions – maintaining choices & control
Welcome to New Jersey Wills
It's Not Just Naming a Guardian: The Young Family Estate Planning Toolkit
Women In Transition – Estate Planning Issues
The Boomer Toolkit - "Must-Have" Legal Knowledge for Every Woman in Transition
Parent-Talk – An Informal Estate Planning Workshop For Moms and Dads Thinking about Wills
Maximizing Your Family's Legal Health: Planning for Transitions With the Least Outside (Court) Involvement
UJA Federation (Bergen County) Endowment Foundation Panel: Charitable Trust Planning

EXPERTISE

- Estate Planning
- Trusts and Estate Administration and Probate
- Estate Tax Representation

INDUSTRY FOCUS

- High net worth individuals and families
- Fiduciaries
- Closely-Held Business Owners
- Same sex couples and their families

EDUCATION

- JD, Loyola University, New Orleans
- BA, French, The Ohio State University
- Participant in the Goldman Sachs 10,000 Small Businesses Program

ADMISSIONS

- New York State Bar
- New Jersey State Bar
- US District Court, Southern and Eastern Districts
- US District Court, District of New Jersey
- Supreme Court of the United States

MARCUM
ACCOUNTANTS ▲ ADVISORS

marcumllp.com